



Truma MonoControl CS

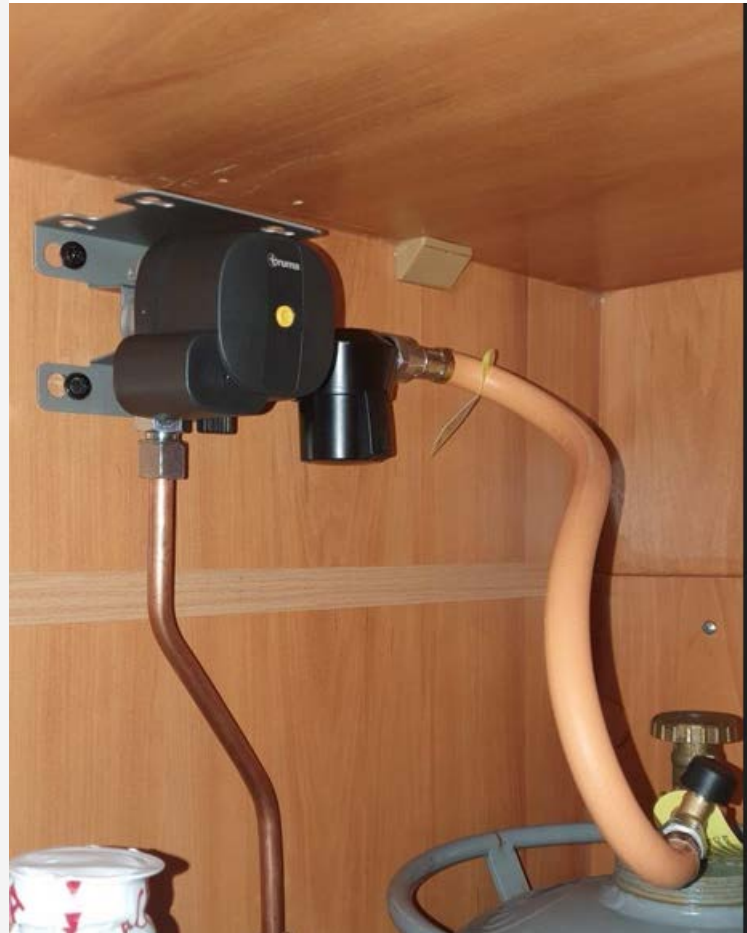
Gas pressure regulator with crash sensor for single-cylinder operation.



Energy sources
Propane / butane

Inlet pressure
0.3 – 16 bar

Outlet pressure
30 mbar



Truma MonoControl CS

Gas pressure regulator with crash sensor for single-cylinder operation



- ✓ Easy to see if the crash sensor has been triggered and easy to reset
- ✓ Lightweight
- ✓ Quick to install





Truma Korkeapaineletku
letkunrikkoventtiilillä 450 mm

KAASUSUODATIN TRUMA

